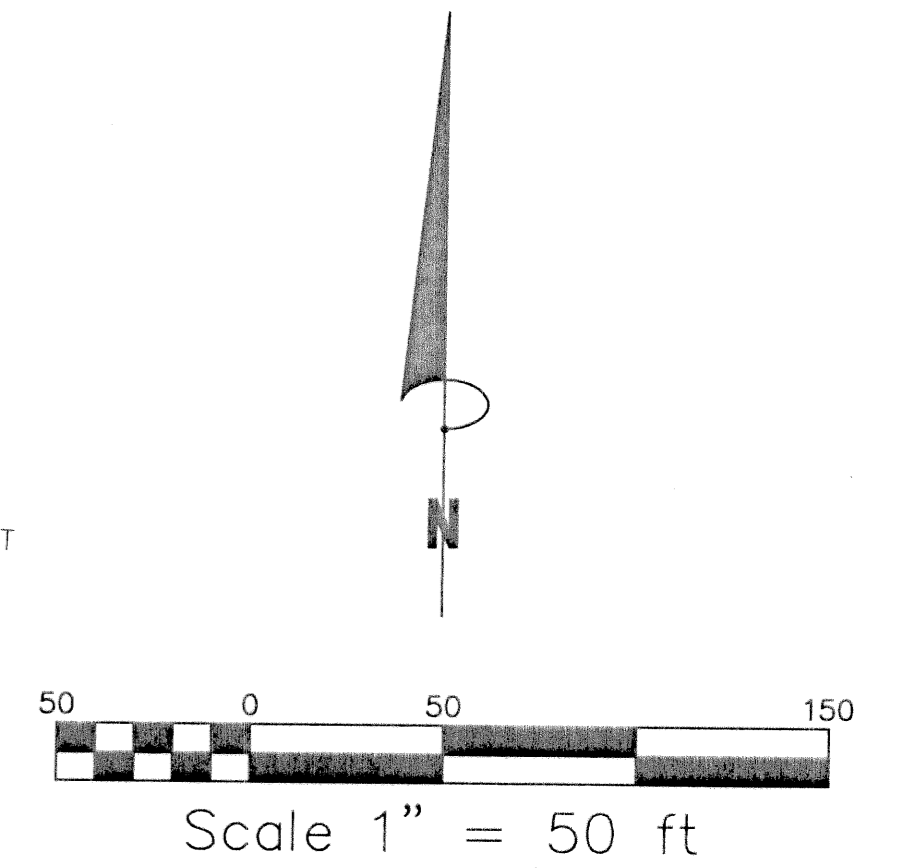
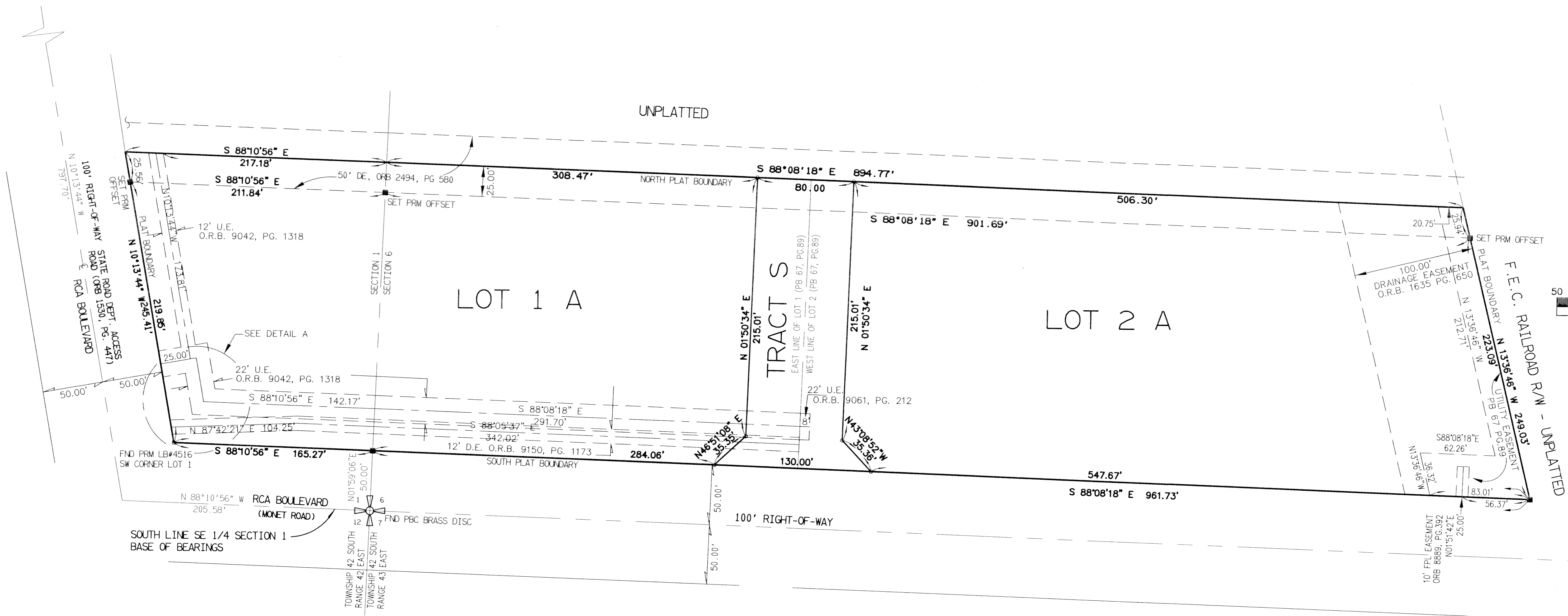


PLAT OF RCA PARK

BEING A REPLAT OF LOTS 1 AND 2, RCA BOULEVARD CENTER, PB 67, PGS 89 AND 90
OF THE PUBLIC RECORDS OF PALM BEACH COUNTY, FLORIDA
LYING IN SECTION 1, TOWNSHIP 42 SOUTH, RANGE 42 EAST AND
SECTION 6, TOWNSHIP 42 SOUTH, RANGE 43 EAST.
CITY OF PALM BEACH GARDENS, PALM BEACH COUNTY, FLORIDA.

JUNE 1998

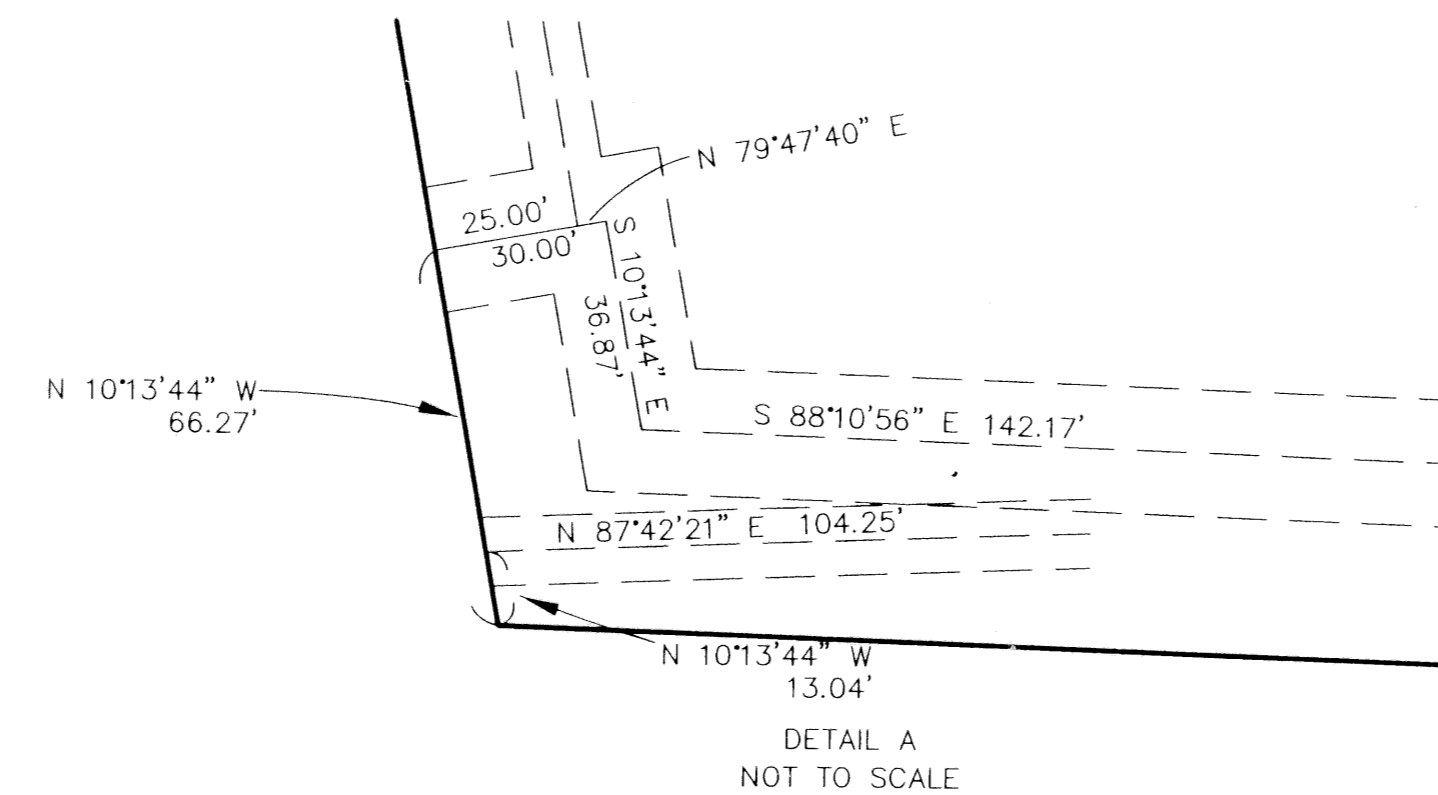
SHEET 2 OF 2



TAZ 100

LEGEND:

- -SET 4"x 4" PERMANENT REFERENCE MONUMENT (P.L.S. 4392)
- -SET 5/8" IRON ROD AND PLASTIC CAP (LB 4897)
- O.R.B. -OFFICIAL RECORD BOOK
- P.B. -PLAT BOOK
- PG(S). -PAGE(S)
- U.E. -UTILITY EASEMENT
- C -CENTERLINE
- R/W -RIGHT OF WAY
- D.E. -DRAINAGE EASEMENT
- NTS -NOT TO SCALE
- PBC -PALM BEACH COUNTY
- PRM -PERMANENT REFERENCE MONUMENT



SUBDIVISION # RCA PARK
 BOOK 83 PAGE 64
 FLOOD MAP #
 ZONING
 ROAD #
 SE
 ZIP CODE
 FUD NAME City of Palm Beach Gardens

KESHAVARZ & ASSOCIATES, INC.
 THIS INSTRUMENT WAS PREPARED BY CHARLES H. ANDERSON
 IN THE OFFICES OF KESHAVARZ & ASSOCIATES, INC.
 1280 N. CONGRESS AVENUE, SUITE 206
 WEST PALM BEACH, FLORIDA 33409
 (561) 689-8600 / FAX 689-7476
 LB 4987